



SUPPORT OUR PROJECTS

Community

Coming together to share experiences, worries and positive thoughts

Join a network of others and share your thoughts, worries and positive thoughts on experiences and our autism community. It's all about you and your support.

- Public and private groups
- Support forums
- Phone-to-voice
- Free high-quality advice & audio calls

Advertisement

Giving a fresh perspective to transform the lives of people with autism

Welcome to autism for autism - your role is special.

Here you'll find a network of people who share your experiences and can help you find the support you need. We're here to help you find the support you need.

Take the guesswork out of the disability.



Our Premium Supporters

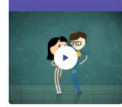
Autism Support is a registered charity and a not-for-profit organization.

- VIVALDO
- THE FINE LINE
- DIG IT
- Downside
- FIFTH FLOOR
- MODAL
- MARDIN

What is Autism?

Autism is a general term that indicates a range of conditions. It's a lifelong condition that affects how people think, feel and behave.

Autism is a complex condition that affects how people think, feel and behave. It's a lifelong condition that affects how people think, feel and behave.



We're here to help

Find out more information, ask questions, share your story, join discussions and more.

Join the community